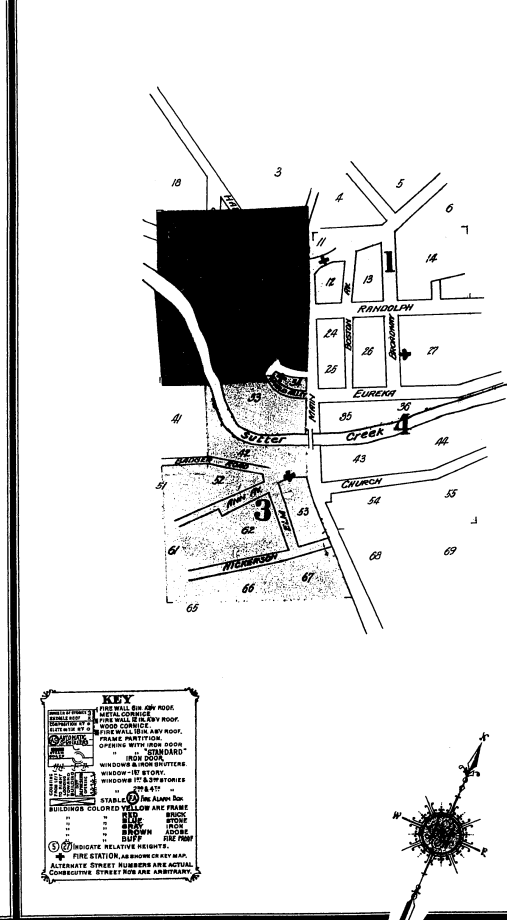
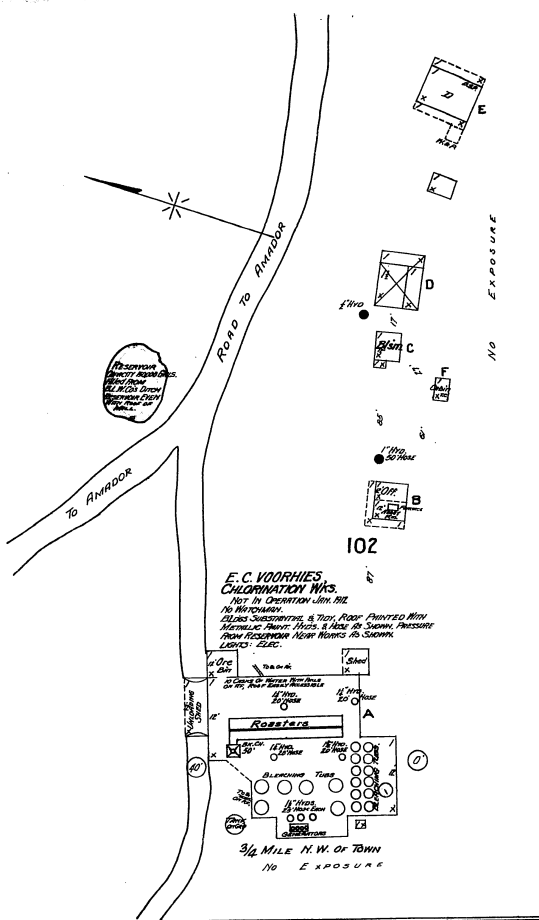


MAY 22 1912



© M.F. 20422



**WATER WORKS** - Owned by PACIFIC GAS & ELECTRIC CO. (PRIVATE OWN)  
CAPACITY SYSTEM SOURCE OF SUPPLY FROM 7,000,000 GAL. RESERVOIR LOCATED  
3/4 MILE S.E. OF TOWN & OVER 500 FEET ABOVE TOWN. RESERVOIR SURVEYED BY  
RANKING RESERVOIR CAPACITY 10,000,000 GAL. LOCATED ABOUT 1/2 MILE S.W. OF  
TOWN & OVER 700 FEET ABOVE TOWN. CAPACITY SYSTEM CONN. SUPPLIED  
FROM ONE END TO MAIN LOCATED 1/4 MILE E. OF TOWN THROUGH 12" DIAM. PIPE  
DRAIN DOWN LINE OF TOWN & 600 GAL. PRESSURE FROM MAIN RESERVOIR  
180 LBS. OPERATED BY TUNNEL PRESSURE FROM REGULATORY RESERVOIR 80 LBS.  
PRESS. & WAYS OF 12" DIAM. 1" THICK STEEL & SOBER STEEL PIPE  
65-75 IN. IN DIA.

**PURE WATER** - VOLUNTEER CO. (ORGANIZED)  
30 WASHINGTON & QUINN - BROADWAY - 1700' 2000' LUNG. CAPACITY. SOURCE  
1/2 MILE S.E. OF TOWN. OVER 500 FEET ABOVE TOWN. 12" DIAM. PIPE  
OPERATED BY AIR. SOURCE. 1200' S. CORNER. BROADWAY. SOURCE. 1/2 MILE S.W. OF TOWN  
OPERATED BY AIR. SOURCE. 1200' S. CORNER. BROADWAY. SOURCE. 1/2 MILE S.W. OF TOWN  
TOWN NOT DISCONTINUED. NO DISE LIMITS.  
TOWN LIGHTED BY ELEC.

**INDEX.**

INDEX	SHEET
A	
Amador County Planning Mill	4
" Steam Laundry	3
American Exchange Hotel	3
C	
Central Eureka Mining Co.	5
E	
Eureka Hotel	2
K	
Knight & Co. Foundry & Mash. Shop	4
L	
Levaggi Theatre	4
Lincoln Mfg. & Development Co.	5
M	
Masonic & I. O. O. F. Hall	3
M. E. Church	4
P	
Potter & Mining Co. Hoist	5
Post Office	3
Public School	1
S	
South Eureka Mining Co.	5
Standard Elec. Co.	3
Summit House	6
Sutter, The	4
" Creek Brewery	2
" Soda Works	1
V	
Voorhies, E. E., Chlorination Works	1
W	
Wildman-Mahoney Mining Co.	5
" Mining Co.	1

