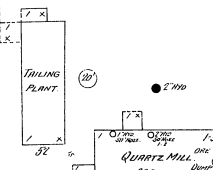


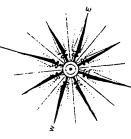
104

**"SOUTH EUREKA MINING CO."**  
- 1/2 mile South of Town, on Hill -

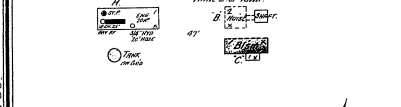
70 EMPLOYEES. RUN DAY & NIGHT. ONE OF THE  
BEST PLANTS IN CALIF. AS NOTED PREVIOUSLY, IN ADDITION  
TO ITS WORK. BULLY MOTORS. POWER FROM  
BLUE LINE UNDER 650 FT. ELEVATION. 187 FEET FROM  
UNITED STATES COAST AND GEOD. SURVEY. ESTABLISHED  
AS SHOWN. PIDS & PIDS AS SHOWN. ELEC. LIGHTS.



105



**BALIOLE MINING CO. HOIST'S WORKS**  
1/2 mile E. of Town



107

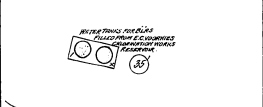


**BALIOLE MINING CO.**  
1/2 mile E. of Town.

100 EMPLOYEES. RUN DAY & NIGHT.  
LARGE REFRIGERATOR. POWER FROM  
POWER HOUSE FROM BLUE LINE UNDER 650  
FEET. 180 FEET FROM U.S. COAST AND GEOD. SURVEY.  
LIGHTS. TEST OIL LAMP.

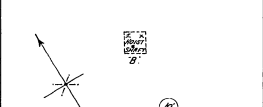
NO EXPOS.  
MILL NOT IN OPERATION. TO SHUT UP  
ABOUT YEAR 1898.

**LINCOLN MFG. & DEVELOPMENT CO.**  
1/2 mile N.W. of Town.



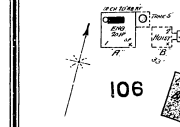
108

**WILDMAN-MAHONEY MFG CO.**  
1/2 mile N.W. of Town.

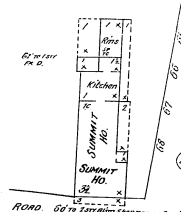
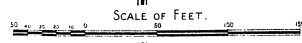


NO EXPOS.

**POTAZUBA MFG CO.**  
1/2 mile E. of Town.



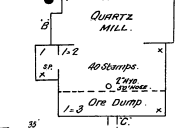
NO EXPOS.



ROAD. GO TO TOWN ON SHADERS ROAD.

**WILDMAN-MAHONEY MFG CO.**  
1/2 mile N.W. of Town.

NO EXPOS.



NO EXPOS.

Library of Congress