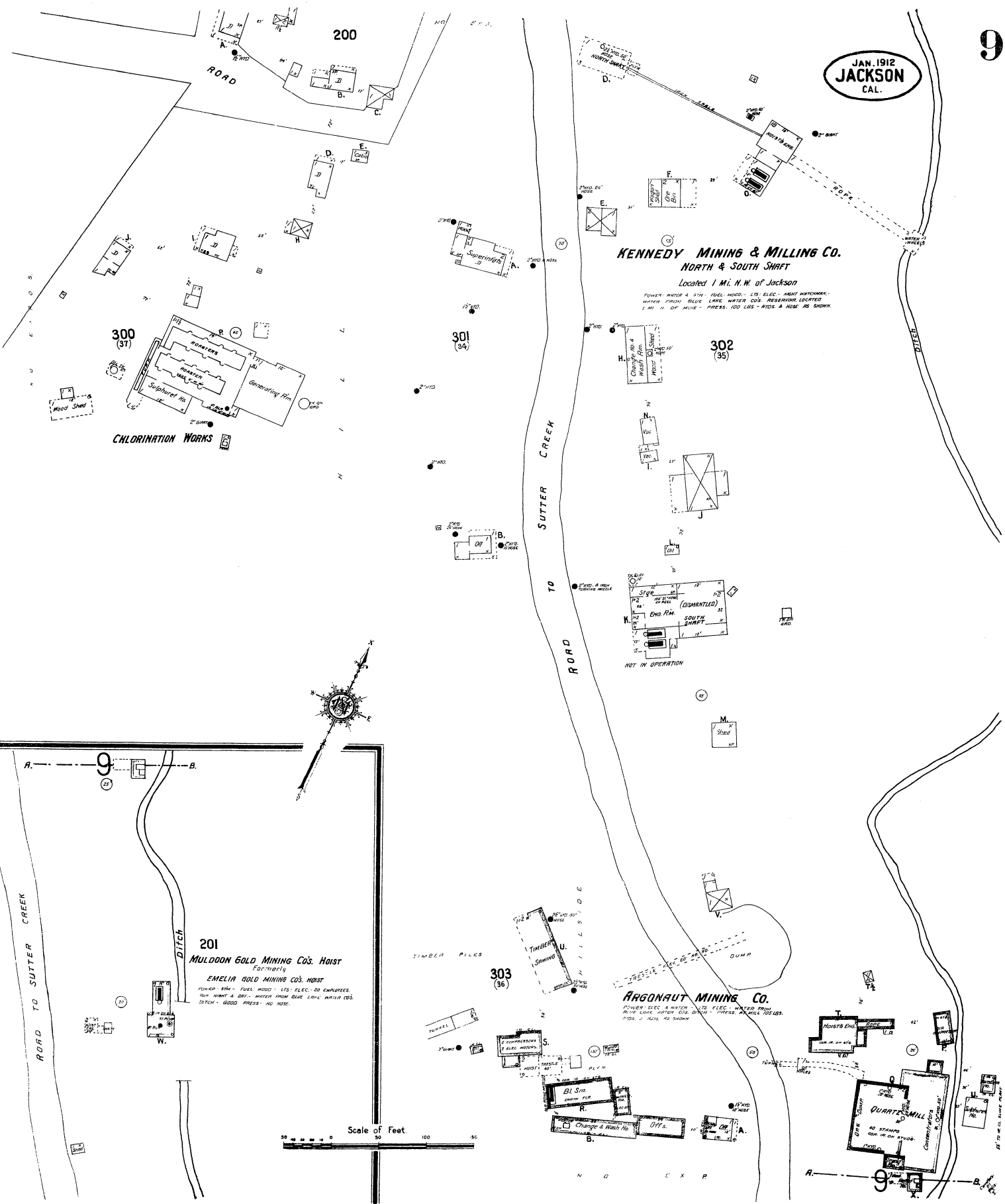


JAN. 1912
JACKSON
CAL.

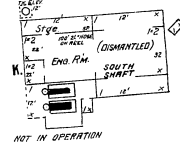
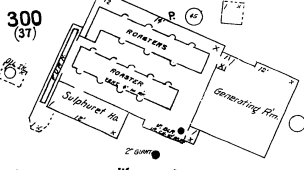


KENNEDY MINING & MILLING CO.
NORTH & SOUTH SHAFT

Located 1 Mi. N.W. of Jackson

PUMPS: WATER & SHAFT - FUEL HOOD - LVS. ELEC. - HEAVY WAREHOUSE -
WATER FROM RAILC LINK. WATER CO'S RESERVOIR LOCATED
1 MI. N. OF HOVE - PRESS. - 100 LBS. - HOVE & HOVE NO SHOW.

CHLORINATION WORKS

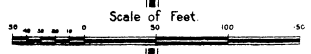


201 MULDOON GOLD MINING CO'S. HOIST
Formerly
EMELIA GOLD MINING CO'S. HOIST

PUMPS: SHAFT - FUEL HOOD - LVS. ELEC. - 20 EMPLOYEES.
TWIN HOIST & DIES. WATER FROM DUE LINK. WATER CO'S.
DITCH - GOOD PRESS. NO HOSE.

ARGONAUT MINING CO.

PUMPS: SHAFT & HOIST - LVS. ELEC. - WAREHOUSE FROM
RAILC LINK. WATER CO'S. RESERVOIR - PRESS. - 100 LBS.
HOVE & HOVE NO SHOW.



N O E X P