

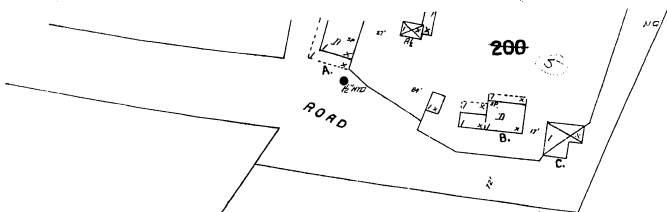
JAN. 1912  
JACKSON  
CAL.

### KENNEDY MINING & MILLING CO.

NORTH & SOUTH SHAFT

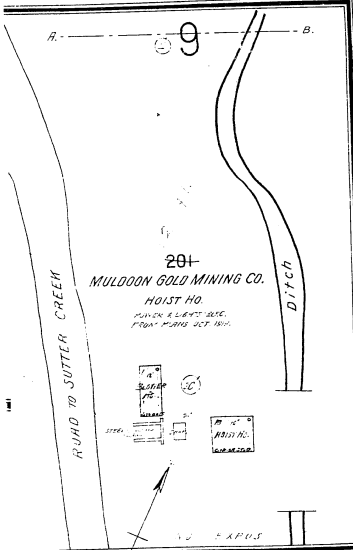
Located 1 Mi. N.W. of Jackson

POWER: WATER & 31HP - FUEL: WOODS - 175 KLEC - HIGH PERFORMANCE  
WATER PUMP: BELLE LANE - WATER COOL. PRESERVE LOCATED  
1 MI. N. OF MINE - PRESS 100 LBS - 1125, & MORE AS SHOWN  
(WELL IN DISCUSSION NOV 1908)



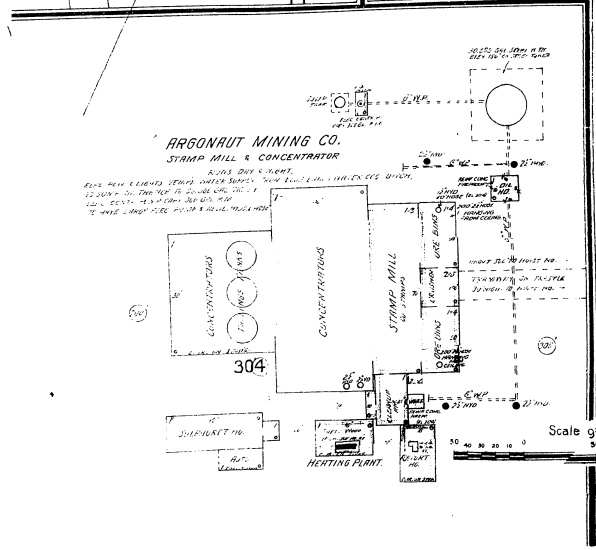
300 (31)  
Machinery including:  
- HOIST NO.  
- Siphon No.  
- Generating Mch.  
- Wood Shed

240 ft  
CHLORINATION WORKS  
1 1/2 ft  
2 ft  
1 1/2 ft  
2 ft



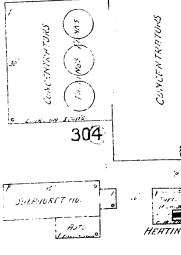
### MULDOON GOLD MINING CO.

HOIST NO.  
201, 202, 203, 204, 205, 206, 207, 208, 209, 210, 211, 212, 213, 214, 215, 216, 217, 218, 219, 220, 221, 222, 223, 224, 225, 226, 227, 228, 229, 230, 231, 232, 233, 234, 235, 236, 237, 238, 239, 240, 241, 242, 243, 244, 245, 246, 247, 248, 249, 250, 251, 252, 253, 254, 255, 256, 257, 258, 259, 260, 261, 262, 263, 264, 265, 266, 267, 268, 269, 270, 271, 272, 273, 274, 275, 276, 277, 278, 279, 280, 281, 282, 283, 284, 285, 286, 287, 288, 289, 290, 291, 292, 293, 294, 295, 296, 297, 298, 299, 300, 301, 302, 303, 304, 305, 306, 307, 308, 309, 310, 311, 312, 313, 314, 315, 316, 317, 318, 319, 320, 321, 322, 323, 324, 325, 326, 327, 328, 329, 330, 331, 332, 333, 334, 335, 336, 337, 338, 339, 340, 341, 342, 343, 344, 345, 346, 347, 348, 349, 350, 351, 352, 353, 354, 355, 356, 357, 358, 359, 360, 361, 362, 363, 364, 365, 366, 367, 368, 369, 370, 371, 372, 373, 374, 375, 376, 377, 378, 379, 380, 381, 382, 383, 384, 385, 386, 387, 388, 389, 390, 391, 392, 393, 394, 395, 396, 397, 398, 399, 400.

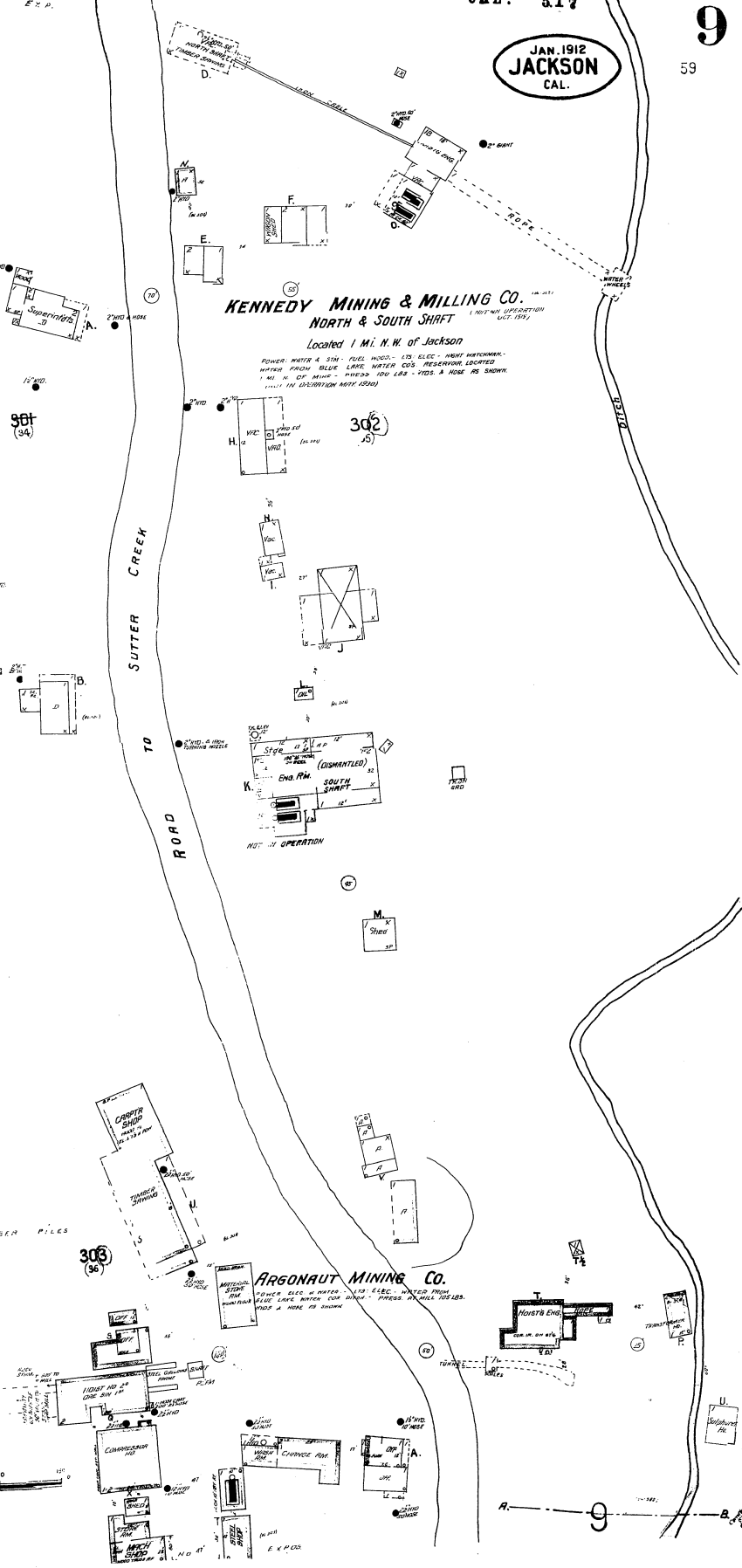


### ARGONAUT MINING CO.

STAMP MILL & CONCENTRATOR



Scale of Feet



### ARGONAUT MINING CO.

301, 302, 303, 304, 305, 306, 307, 308, 309, 310, 311, 312, 313, 314, 315, 316, 317, 318, 319, 320, 321, 322, 323, 324, 325, 326, 327, 328, 329, 330, 331, 332, 333, 334, 335, 336, 337, 338, 339, 340, 341, 342, 343, 344, 345, 346, 347, 348, 349, 350, 351, 352, 353, 354, 355, 356, 357, 358, 359, 360, 361, 362, 363, 364, 365, 366, 367, 368, 369, 370, 371, 372, 373, 374, 375, 376, 377, 378, 379, 380, 381, 382, 383, 384, 385, 386, 387, 388, 389, 390, 391, 392, 393, 394, 395, 396, 397, 398, 399, 400.

POWER: 45HP & WATER - 175 KLEC - WATER PUMP  
PUMP: BELLE LANE - WATER COOL. PRESERVE LOCATED  
1 MI. N. OF MINE - PRESS 100 LBS - 1125, & MORE AS SHOWN  
(WELL IN DISCUSSION NOV 1908)