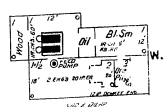


N O E X P O S

JAN. 1912
JACKSON
CAL.

8

WAGON ROAD



200
(43)

ALMA MINE

BUILD. SUBSTANTIAL & MOD.
 FUEL IN 5000 - 175' ELEC.
 2 EMPLOYEES.
 WATER SUPPLY INADEQUATE
 SEVERAL PASSES THROUGH SLIDE.

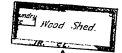
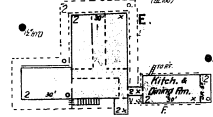
NOT IN OPERATION JAN. 1912.

Located $\frac{1}{4}$ Mi. W. of Court Ho.

AMADOR COUNTY HOSPITAL

475' WATER - 170' ELEC.
 WOOD SHED.
 150' W. WARE.

For Location See Key Map



100



MOKELUMNE HILL

RD.

Middle Fork Jackson Creek

ZEILA MINING Co.

POWER STATION, WATER & ELEC. - FUEL OIL.
 125' ELEC. - NO WATCHMAN - WATER FROM
 PRIVATE RESERVOIR ON HILL. FILLED FROM
 BLUE LIME WATER CUB. DIST. IN 40'S BRANDED.
 40' BY 40' CON. PUMP. 1000' & 100' OF EMERGENCY.
 55 LBS. PRESS. R-HUST & 100 LBS. AT MILL
 WIDE & 100' AS SHOWN.

NOT IN OPERATION OCT. 1912.

For Location See Key Map.



South Fork Jackson Creek



46

Scale of Feet.

