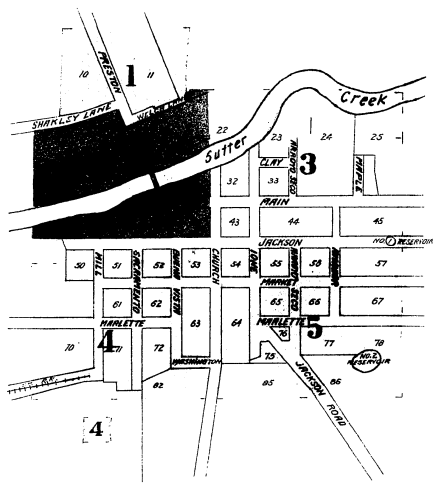


KEY

STANDARD	STANDARD
STANDARD	STANDARD
STANDARD	STANDARD
STANDARD	STANDARD
STANDARD	STANDARD
STANDARD	STANDARD
STANDARD	STANDARD
STANDARD	STANDARD
STANDARD	STANDARD
STANDARD	STANDARD
STANDARD	STANDARD
STANDARD	STANDARD
STANDARD	STANDARD
STANDARD	STANDARD
STANDARD	STANDARD
STANDARD	STANDARD
STANDARD	STANDARD
STANDARD	STANDARD
STANDARD	STANDARD
STANDARD	STANDARD
STANDARD	STANDARD
STANDARD	STANDARD
STANDARD	STANDARD
STANDARD	STANDARD
STANDARD	STANDARD
STANDARD	STANDARD
STANDARD	STANDARD
STANDARD	STANDARD
STANDARD	STANDARD
STANDARD	STANDARD
STANDARD	STANDARD
STANDARD	STANDARD
STANDARD	STANDARD
STANDARD	STANDARD
STANDARD	STANDARD
STANDARD	STANDARD
STANDARD	STANDARD

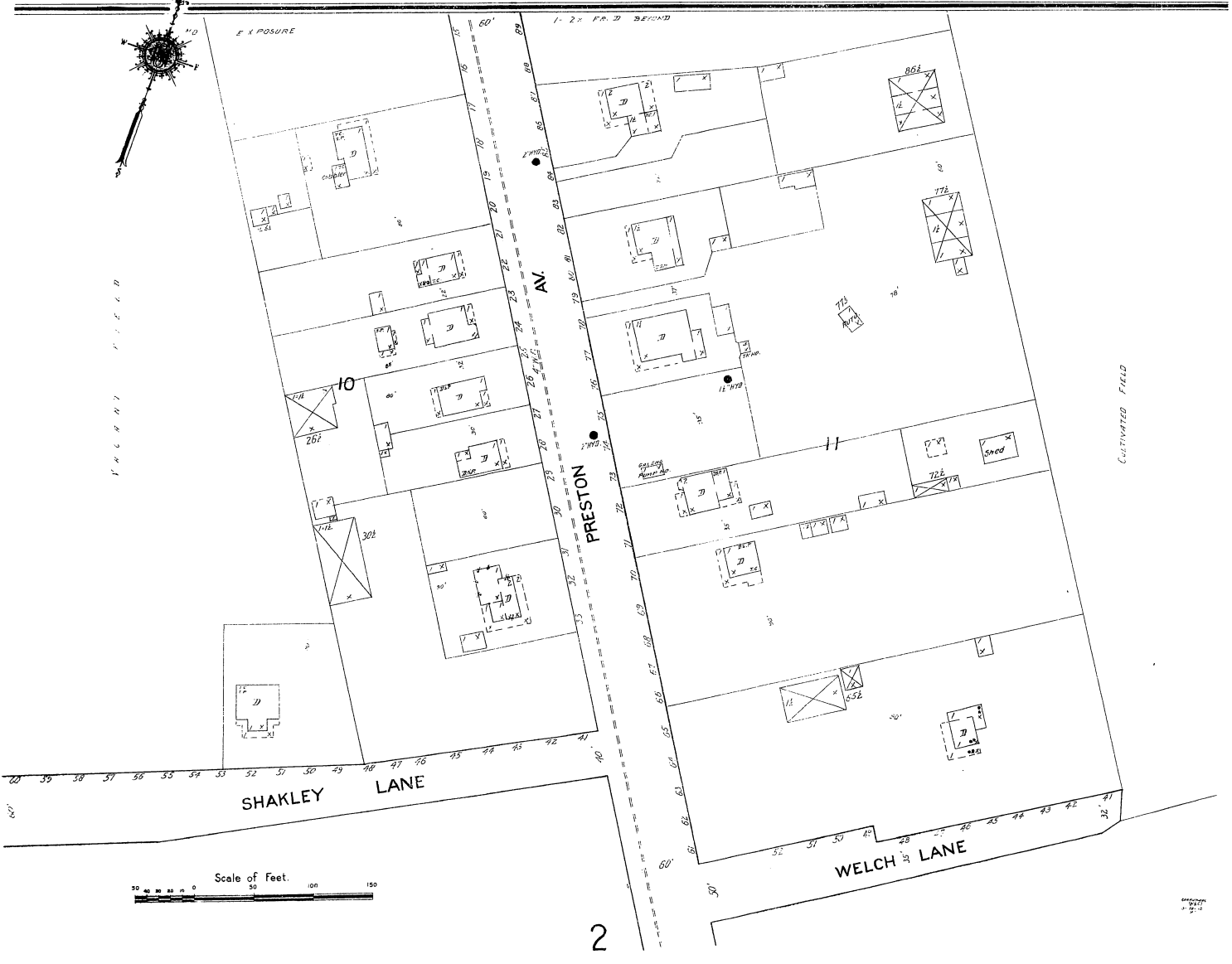
SPECIALS

A	Sheet
Agricultural Society's Pavilion	2
Anador County Roller Mills	2
B	Sheet
Baptist Church	4
C	Sheet
Commercial Hotel	3
F	Sheet
First Presbyterian Church	5
Free Methodist Church	5
G	Sheet
Golden Star Hotel	2
I	Sheet
Ione Creamery & Soda Works	2
Flour Mills Lumber Yard	4
Public School	4
Union High School	4
M	Sheet
M. E. Church	4
R	Sheet
R. C. Church	4



WATER FACILITIES—
 IONE WATER WORKS (PRIVATE CORP.) QUALITY SYSTEM SOURCE AT CHERRY, FEED 2
 RESERVOIRS AND CAPY 300000 GALS. LEL. AT HEAD OF JACKSON ST. 1 CLK. 90 FEET
 CON. THROUGH MAIN. HAS CAPY 300000 GALS. LEL. IN BLOCK TO STREET 50 FEET. 75
 FEET. CON. MENTIONED ABOVE. RESERVOIRS SUPPLIED FROM SUTTER CREEK &
 IRRIGATION CANAL. DRAIN 2 FEET 6" x 3" 8" IRON PIPING. 22.5 FEET. 15 FEET.
 CANALS BE USED FOR FIRE PURPOSES. PRESSURE AT HEAD 140 LBS.
FIRE DEPT.—VOL. CO. (NOT ORGANIZED) APPOINTED—400 2" COTTON RUBBER
 LINES. HAS A 40 GALS. CHEMICAL ENGR. NO FIRE LAMPES.
GRABES—GRADUAL RISE IN EAST PART OF TOWN.
 TOWN NOT INCORPORATED. TOWN LIGHTED BY ELEC. & KEROSENE LAMPES.

APR 10 1912



Scale of Feet.
 0 50 100 150