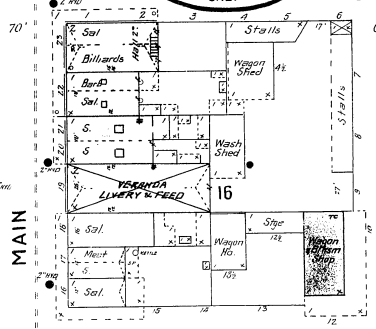


JUNE, 1898
IONE
CAL.

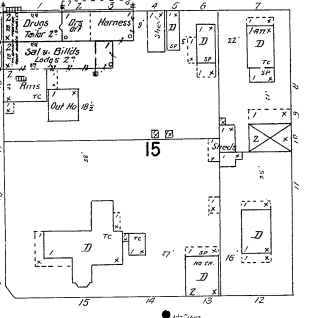
3

CHURCH



BUENA VISTA

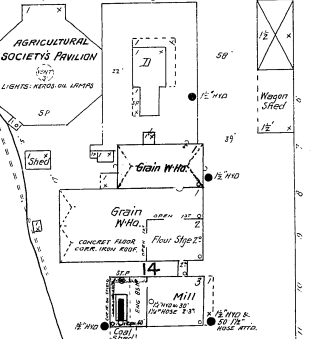
4



SACRAMENTO

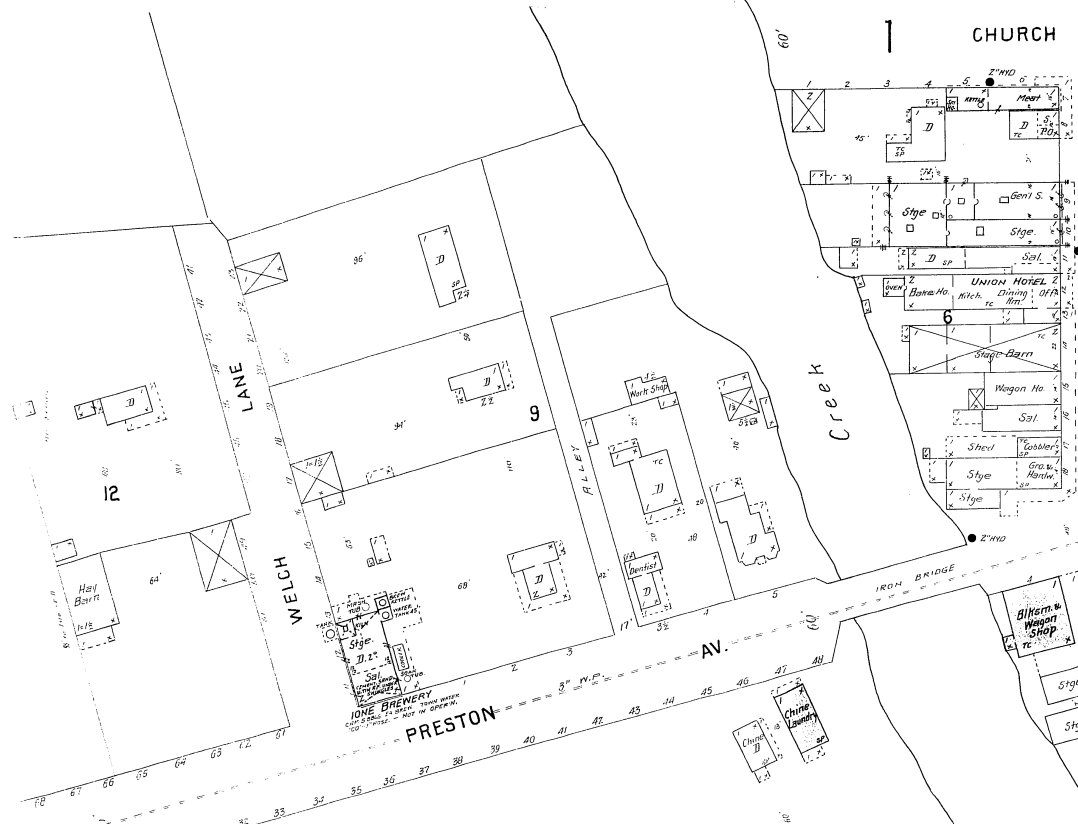
JACKSON

4



AMADOR COUNTY
ROLLER FLOUR MILLS

ROAD



Creek

IRON BRIDGE

PRESTON

LANE

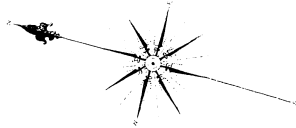
WELCH

LANE
SHAKLEY

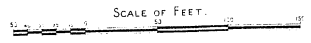
VEGETABLE GARDEN

AMADOR CO. ROLLER FLOUR MILLS.

Cap. 1000 Bushels in 24 hrs.
POWER SYSTEM. FUEL COAL IN PILES. LIGHTS, HEATS BY LAMP.
NO WAREHOUSE. RUN BY TRAIL. SALE. OFF. WATER. WIND AND
WIND AS SOURCE. STEAM POWER IS CONNECTED WITH LINES IN HILL
AND LOW WICKERS, PRESSURE.
MILLS FOR CORN AND W. P. FLOURS.
24 HORSE POWER. 24 HORSE POWER.
3 MILL. 10 HORSE POWER.
3 MILL. 10 HORSE POWER.
3 MILL. 10 HORSE POWER.
DUST FOR THE 32 HORSE POWER. ONE. QUANTITY OF WIND.



10



Map drawn
Library of Congress